

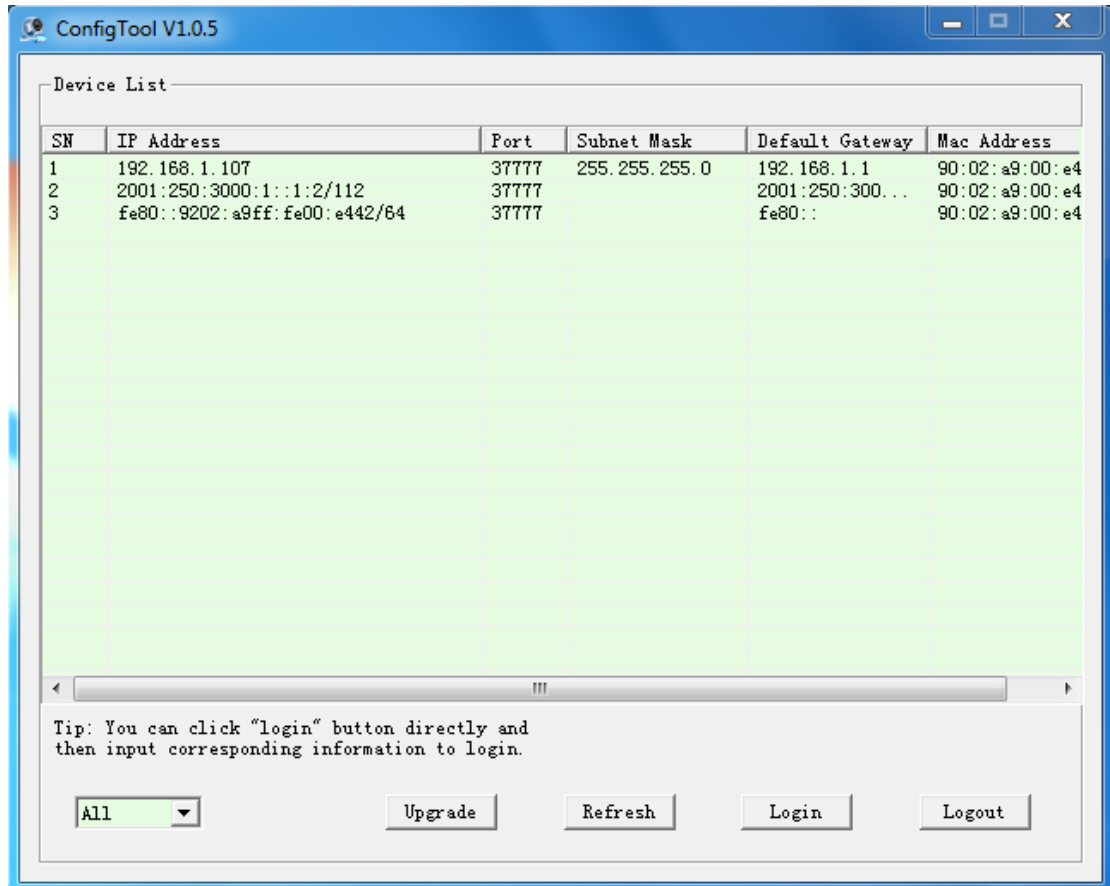
# ConfigTool Instructions

---

1 Search Page .....	2
1.1 Open device web.....	2
1.2 Refresh/Login/Exit.....	4
2 Main UI .....	4
2.1 Network parameter .....	4
2.2 PPPOE .....	5
2.3 System Information .....	6
2.4 System upgrade .....	7
3 Batch upgrade .....	11
4 Note:.....	13

# 1 Search Page

Open the program, and it shows the search page.



P1 Search page 1

The search page contains the above information:

Device list information: SN, IP address, port, sub net mask, MAC address.

Search type: all, IPV4, IPV6.

Upgrade button: Click it for batch upgrade.

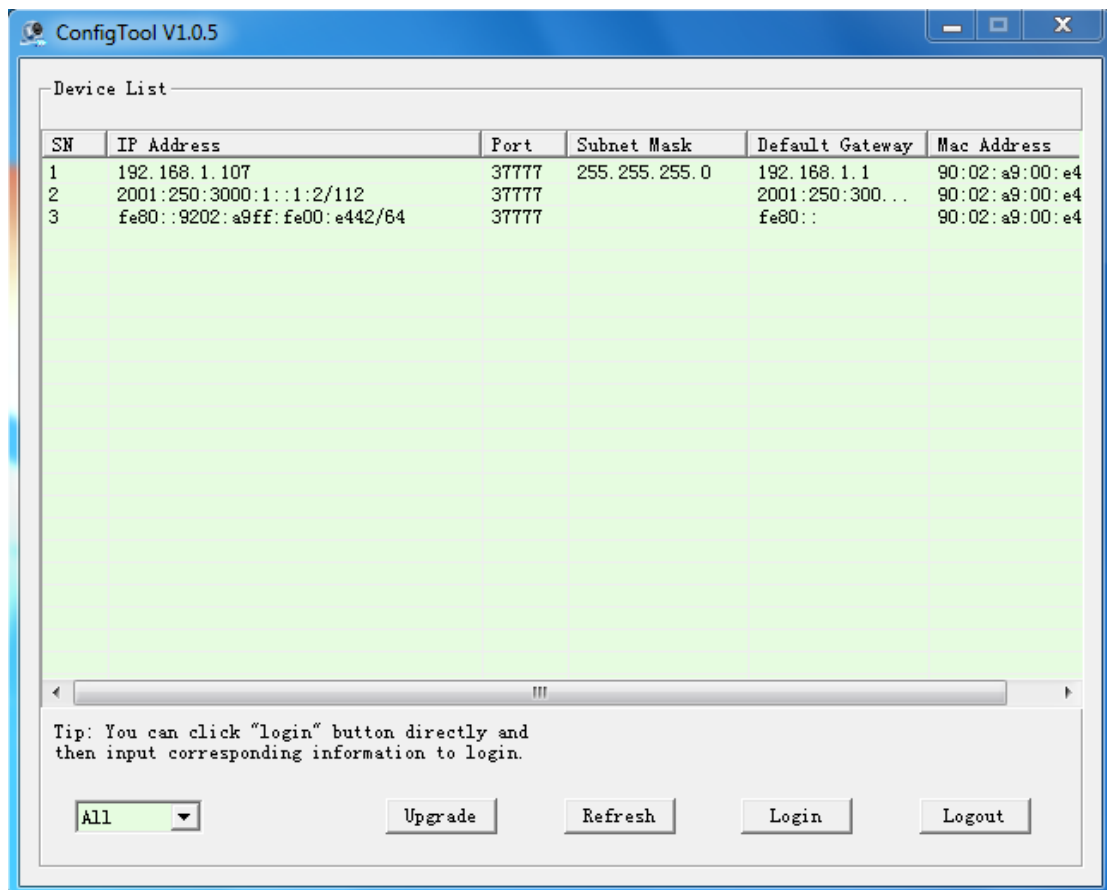
Refresh button: Click it for device search.

Login button: Click to login the selected device.

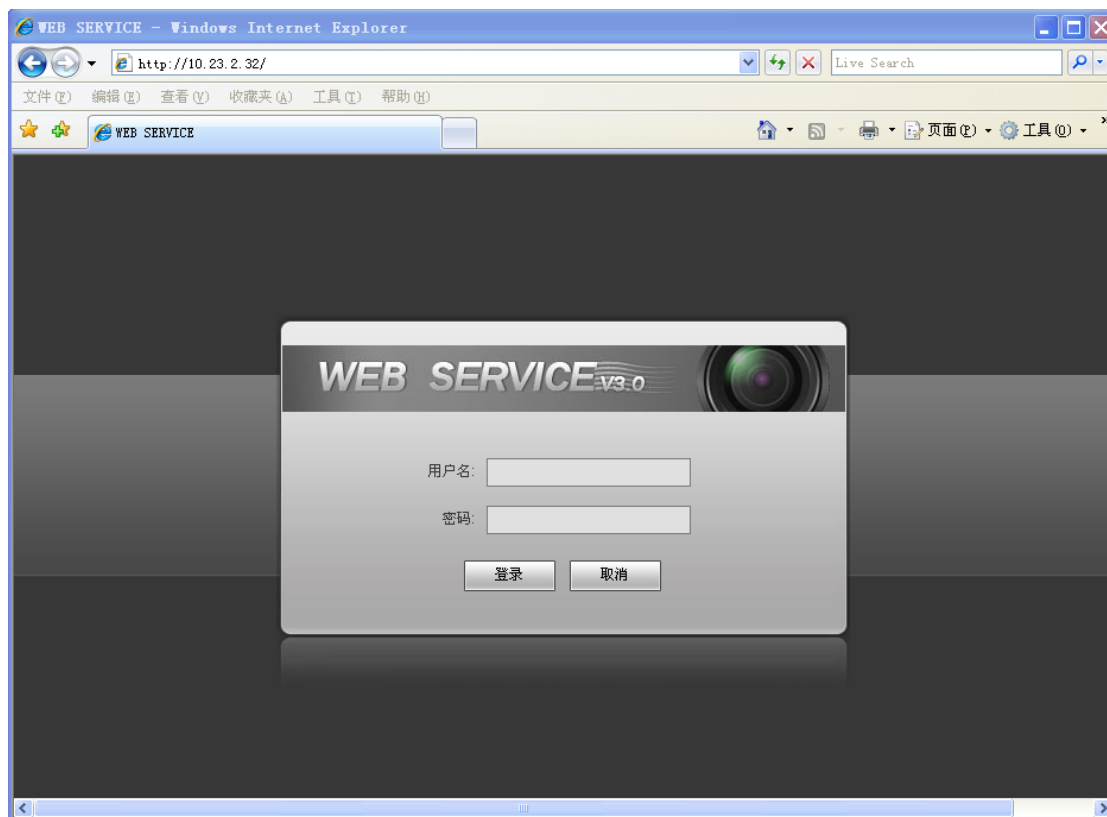
Exit button: Exit the search page

## 1.1 Open device web

Select the device, and right click mouse, it shows up "Open device web". Click the menu, and your default browser will open the device web.



P2 Search page 2



P3 device web

## 1.2 Refresh/Login/Exit

If you want to change the IP, PPPOE, System information, you can use this configuration tool. Double click the list row in the search page and the login dialog shows. Input the device username and password, click the login button.

P4 Login dialog

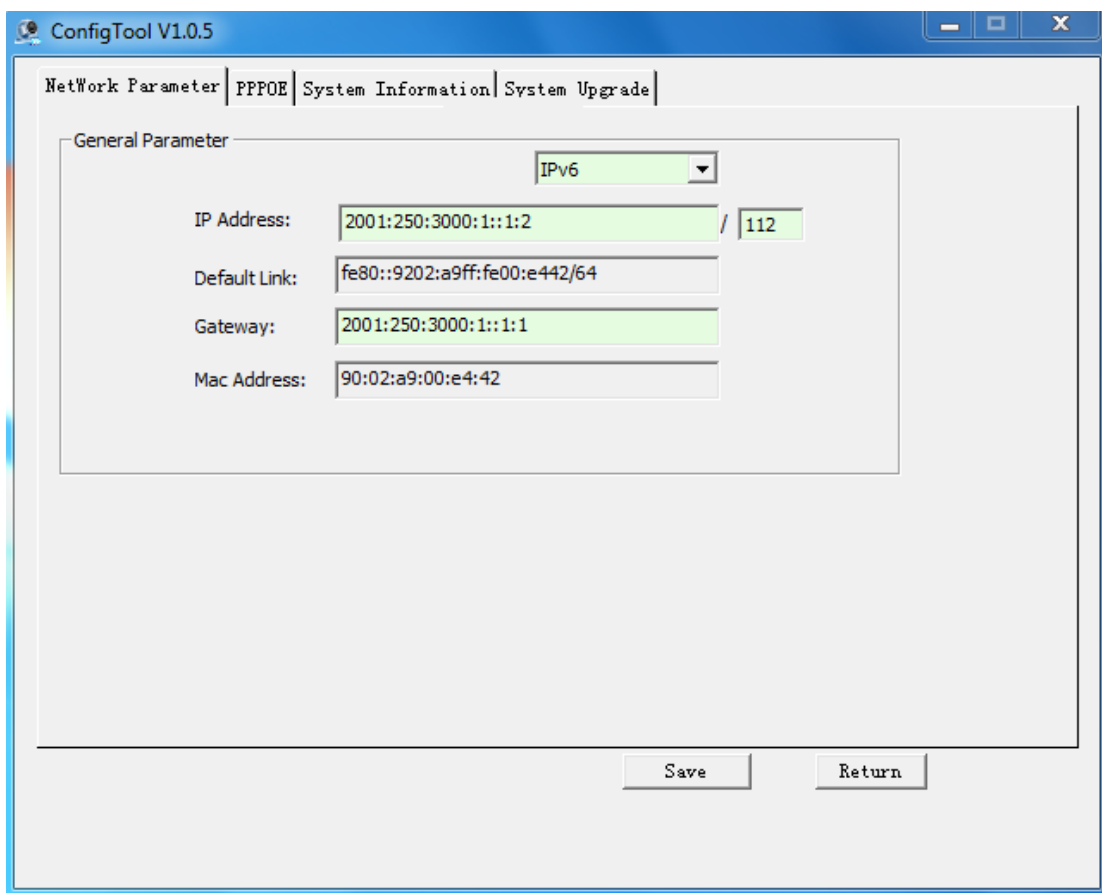
Parameter	Memo
IP Address	IP address of device
User Name	Username of device, default username of device is "admin"
Password	Password of device, default password of device is "admin"
Port	Port of device, default port of device is 37777
Login	Click this button to login device
Cancel	Cancel login, close this dialog

## 2 Main UI

Select the IP address, click the login button and you will go to the main configuration page. You can set parameters such as network, PPPOE, system information, system upgrade, and so on.

### 2.1 Network parameter

Click the "network parameter" tab to configuration the network parameter of your device.

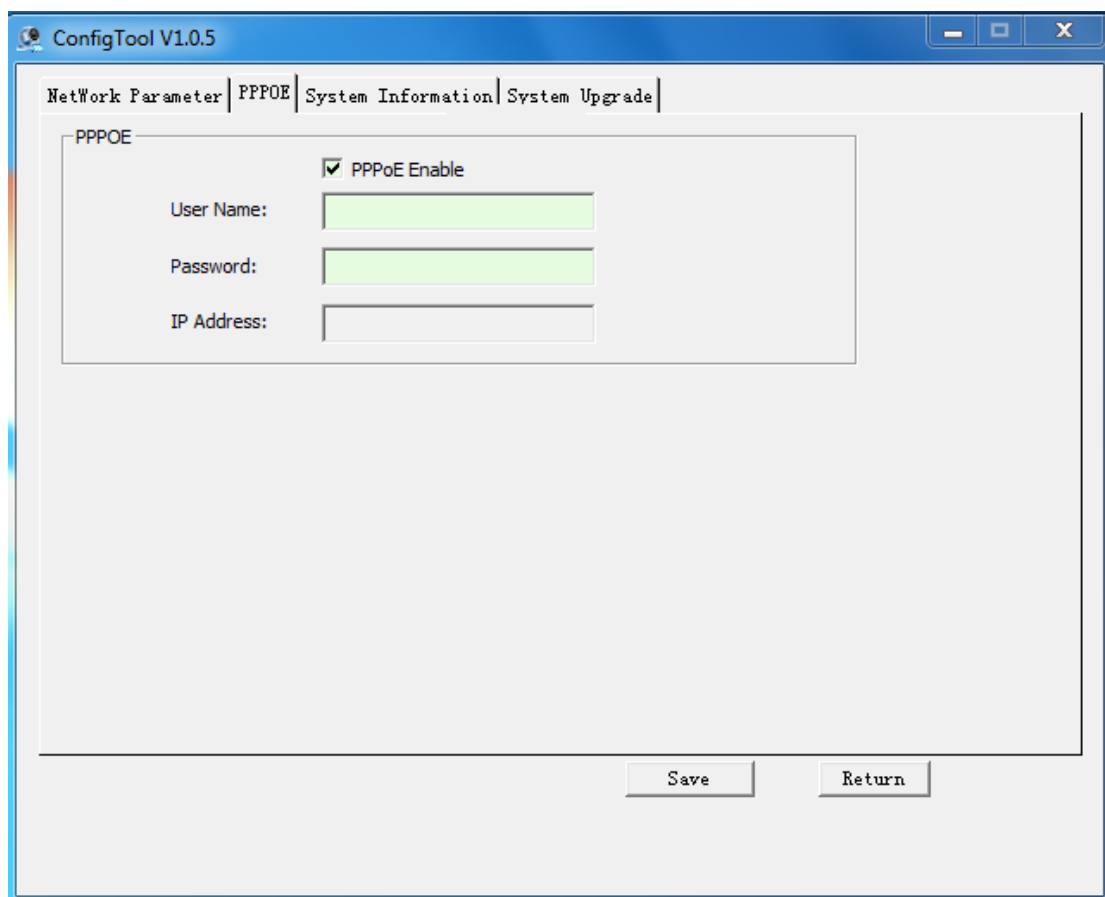


P5 Network parameter

Parameter	Memo
DHCP	Enable of disable DHCP ( Only support IPV4 now )
IP Address	IP address of device.(support IPV4/ IPV6)
Subnet mask	Subnet mask of device.(IPV4)
Gateway	Gateway of device, (support IPV4/ IPV6)
MAC Address	MAC address. (Read only.IPV4/ IPV6)
Default Link	Default link of device, (Read only,IPV6)
IP 类型选择	IP type. Support IPV4 and IPV6
Save	Click to save all information to device
Return	Return to device search page

## 2.2 PPPOE

Click the “PPPOE” tab to configuration PPPOE setting.

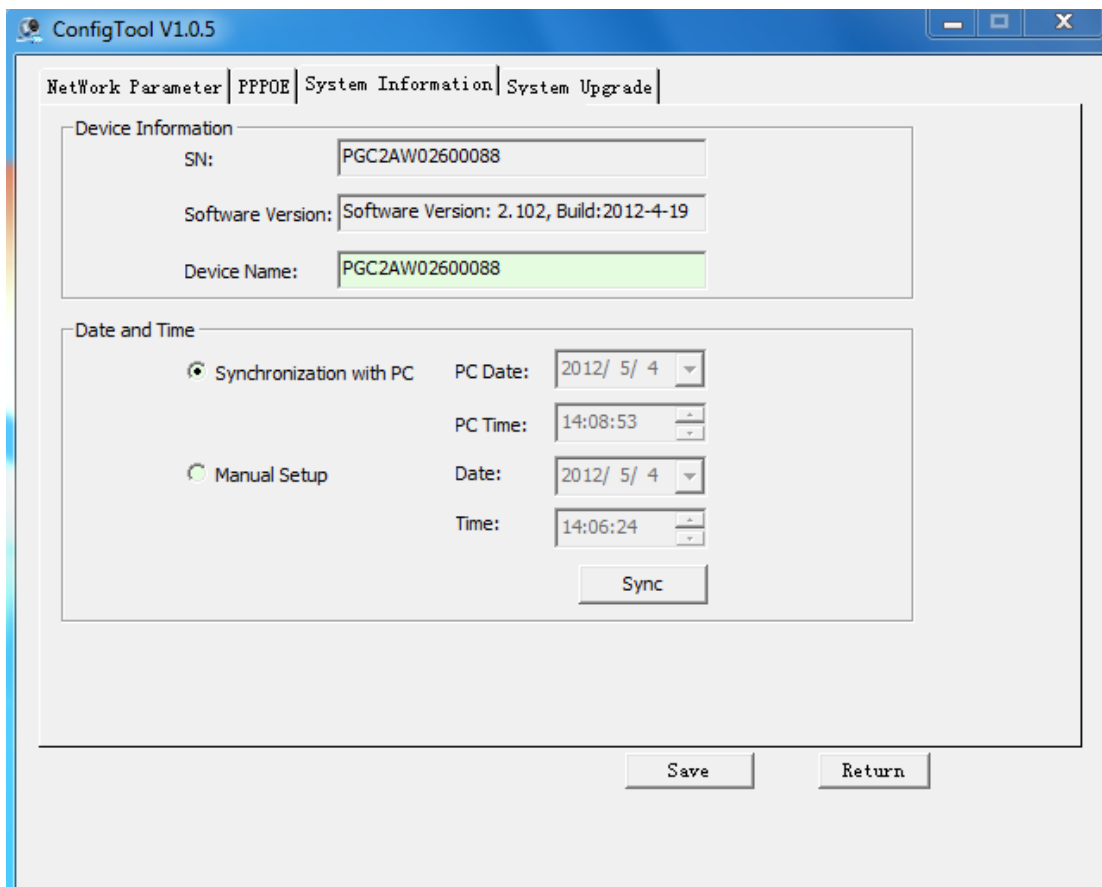


P6 PPPOE setting

Parameter	Memo
PPPOE Enable	Enable or disable PPPOE
User Name	Username for PPPOE
Password	Password for PPPOE
IP Address	IP address of device.
Save	Click this button to save information
Return	Return to device search page

## 2.3 System Information

Click the “System information” tab to configuration system information setting.



P7 System information setting

Parameter	Memo
SN	SN of device(Read only)
Software Version	Software version of device.(Read only)
Device Name	Name of device
Synchronization with PC	Select this option, click "Sync" to Sync device time and PC time.
Manual Setup	Select this option, click "Sync" to set the input time to device.
Save	Click this button to save information
Return	Return to device search page

## 2.4 System upgrade

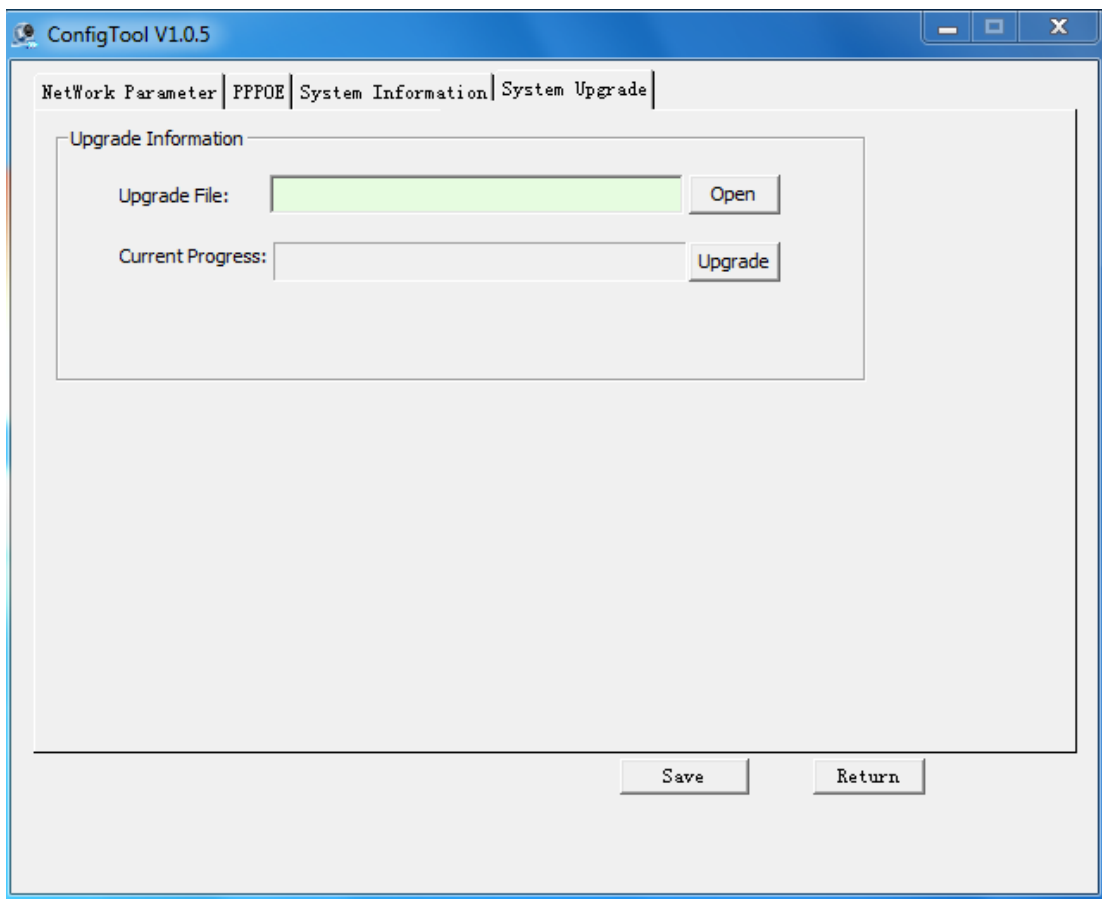
Click the "System Upgrade" tab to upgrade software of device.

Step1. Click "Open" button to choose a upgrade file.

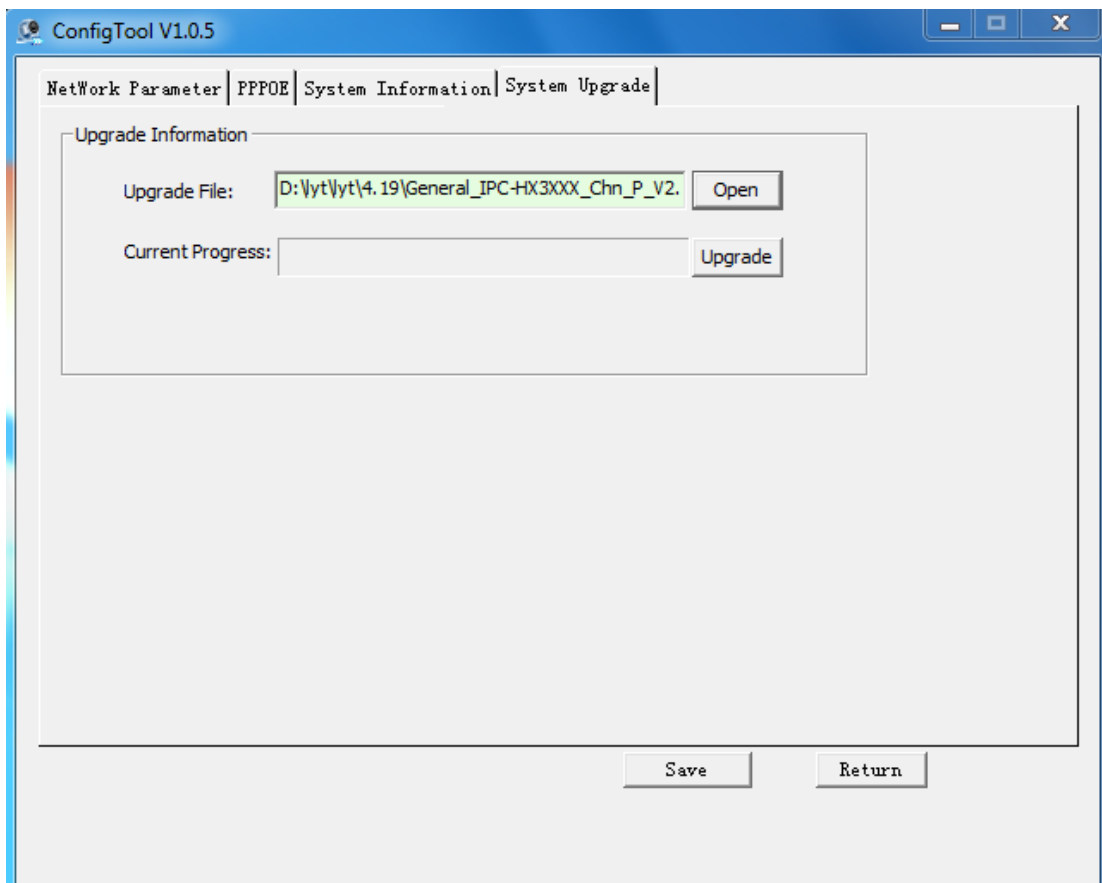
Step2. Click "Upgrade" button to start upgrade. File will be sent to device.

Step3. System upgrade will start after file be sent to device.

Step4. After upgrade finished, device will reboot automatic.

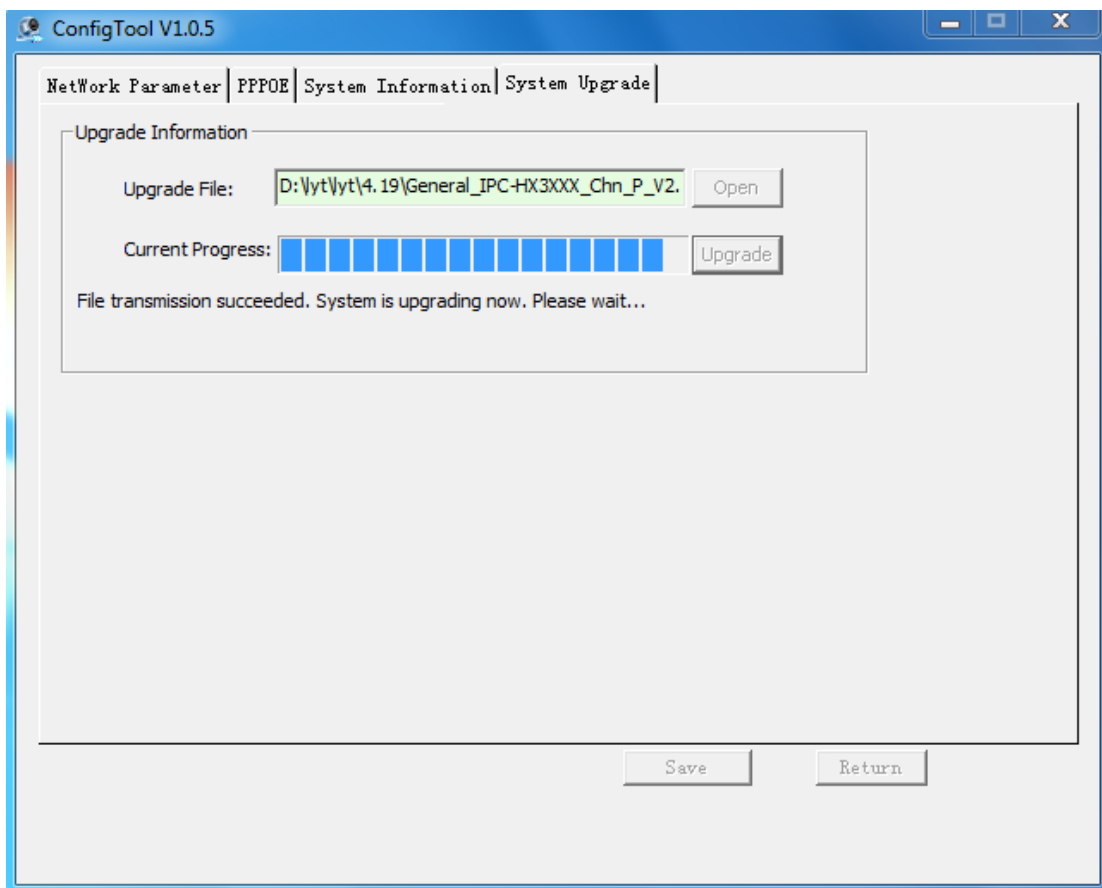
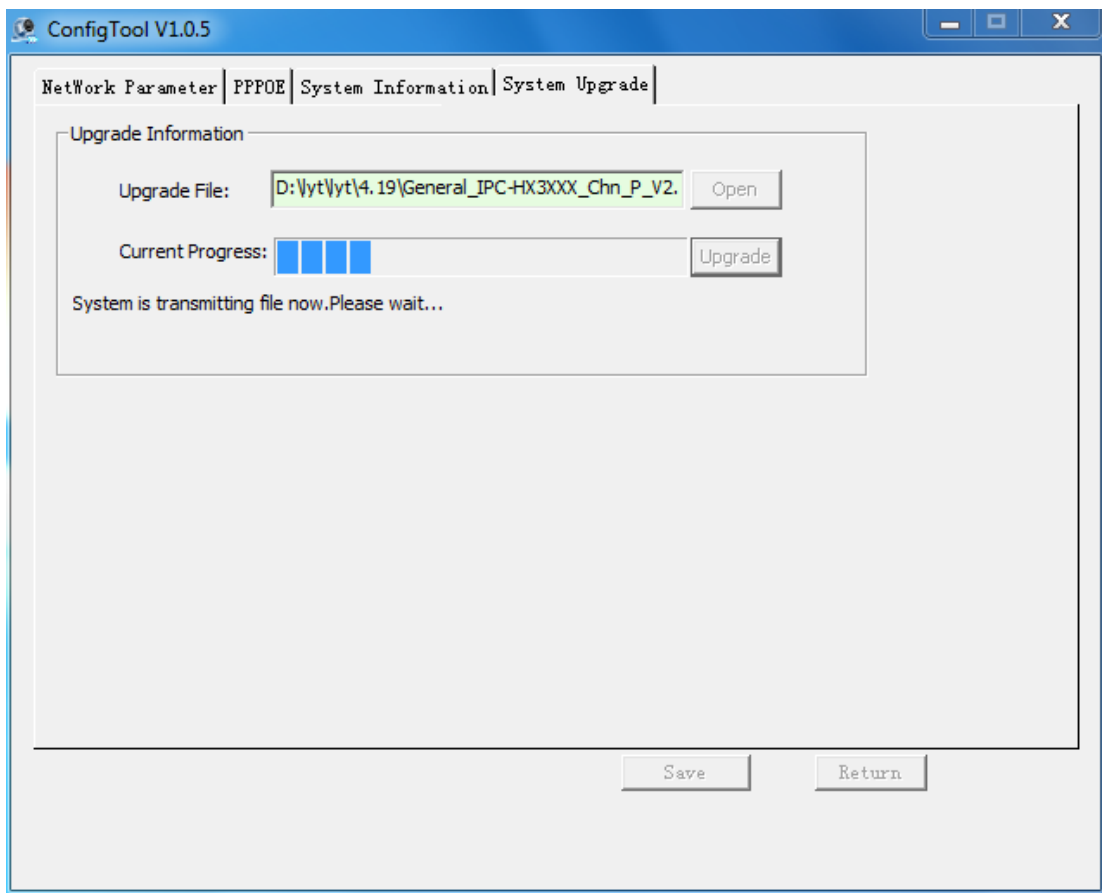


P8 System upgrade 1

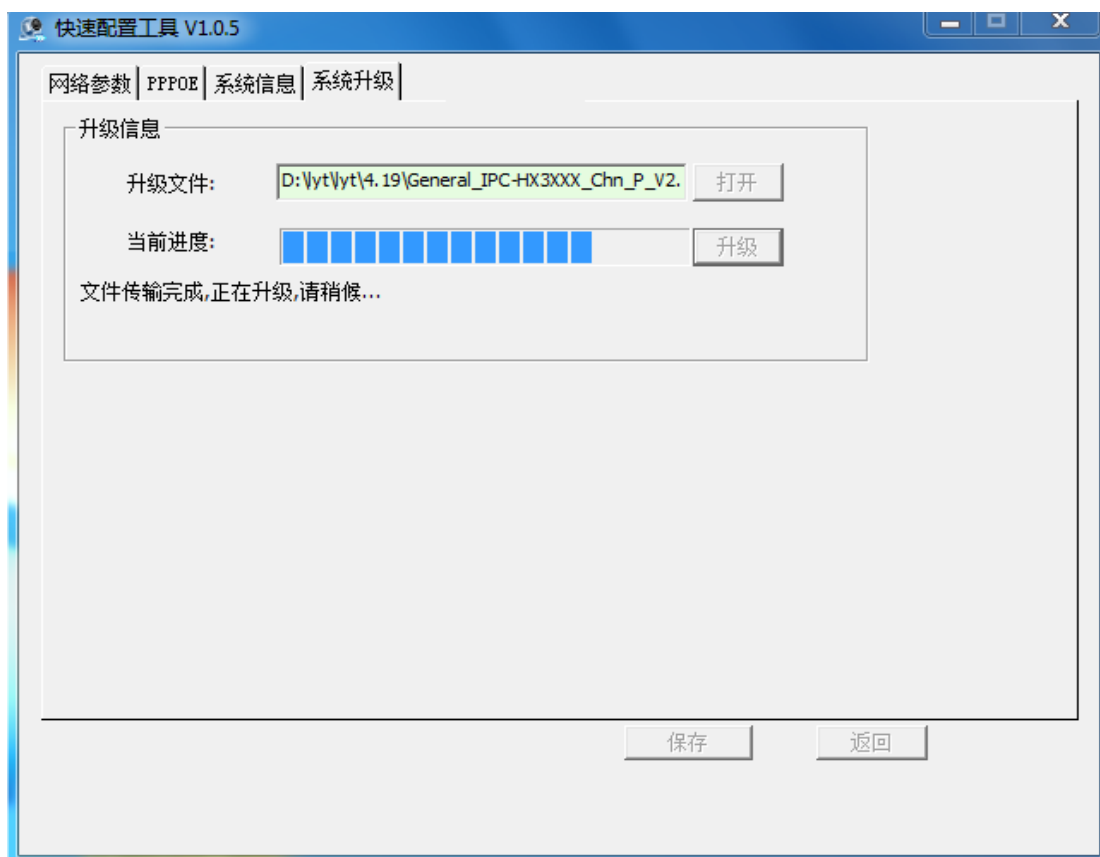




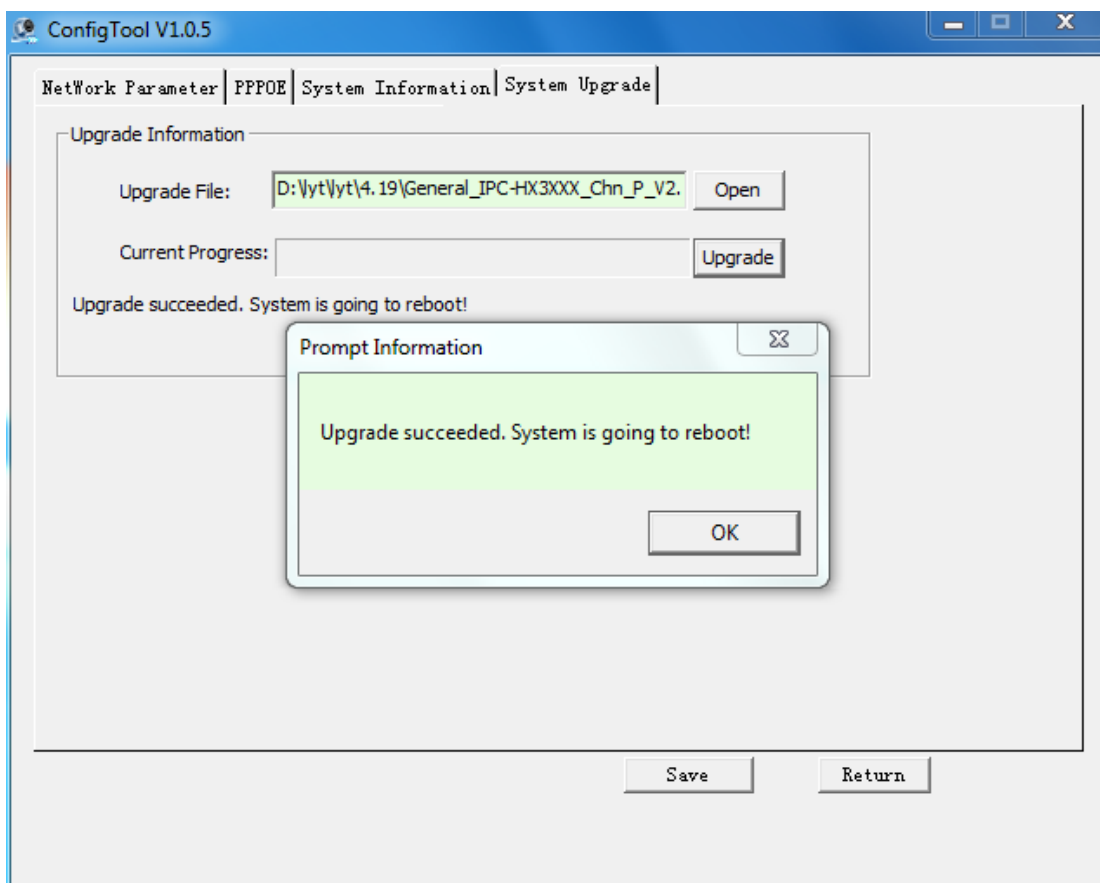
P9 System upgrade 2



P10 System upgrade 3



P10 System upgrade 4

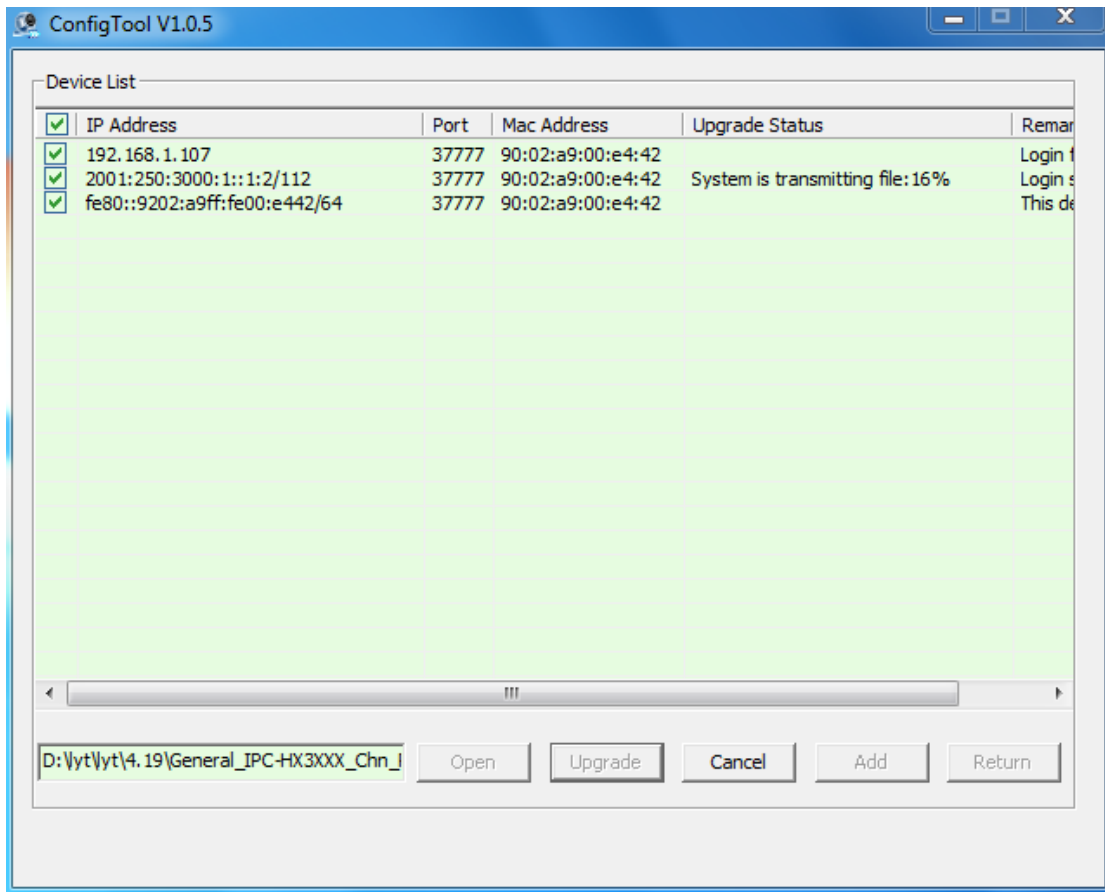


P11 System upgrade 5

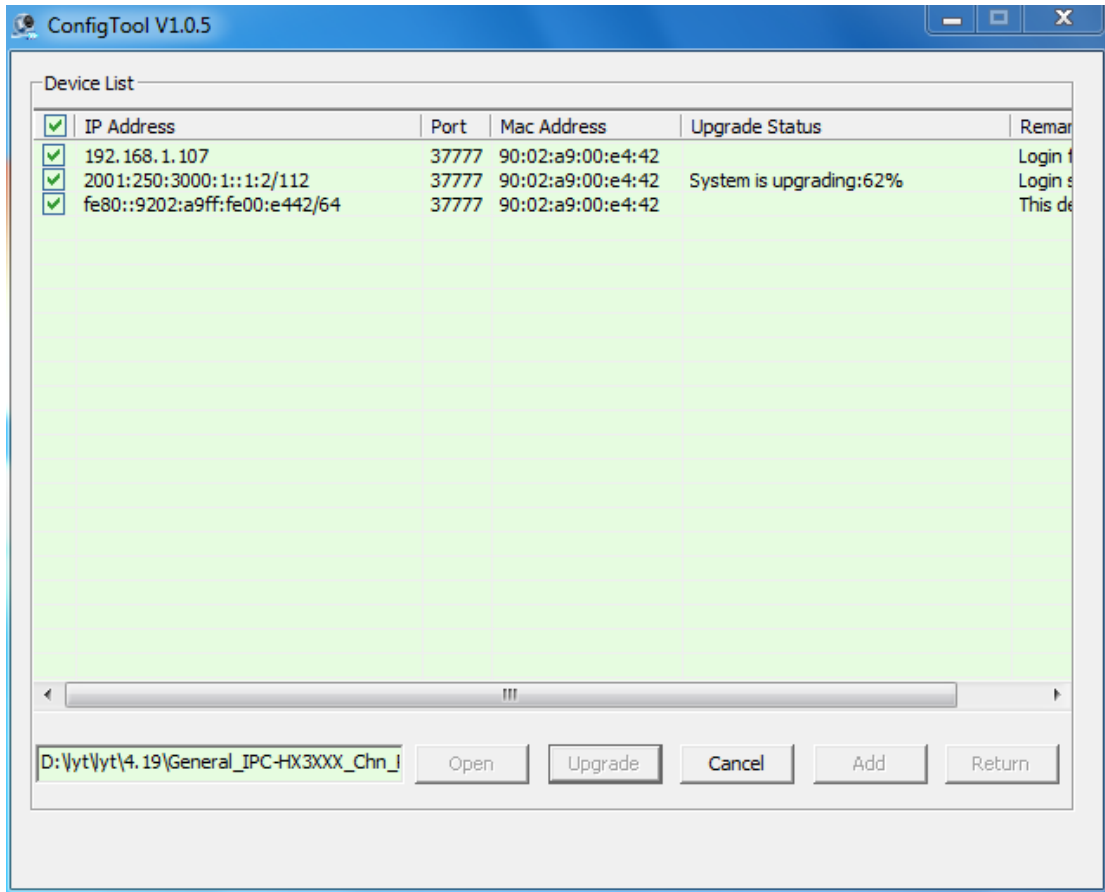
Parameter	Memo
Open	Click to choose a upgrade file
Upgrade	Click this start upgrade
Return	Return to device search page

### 3 Batch upgrade

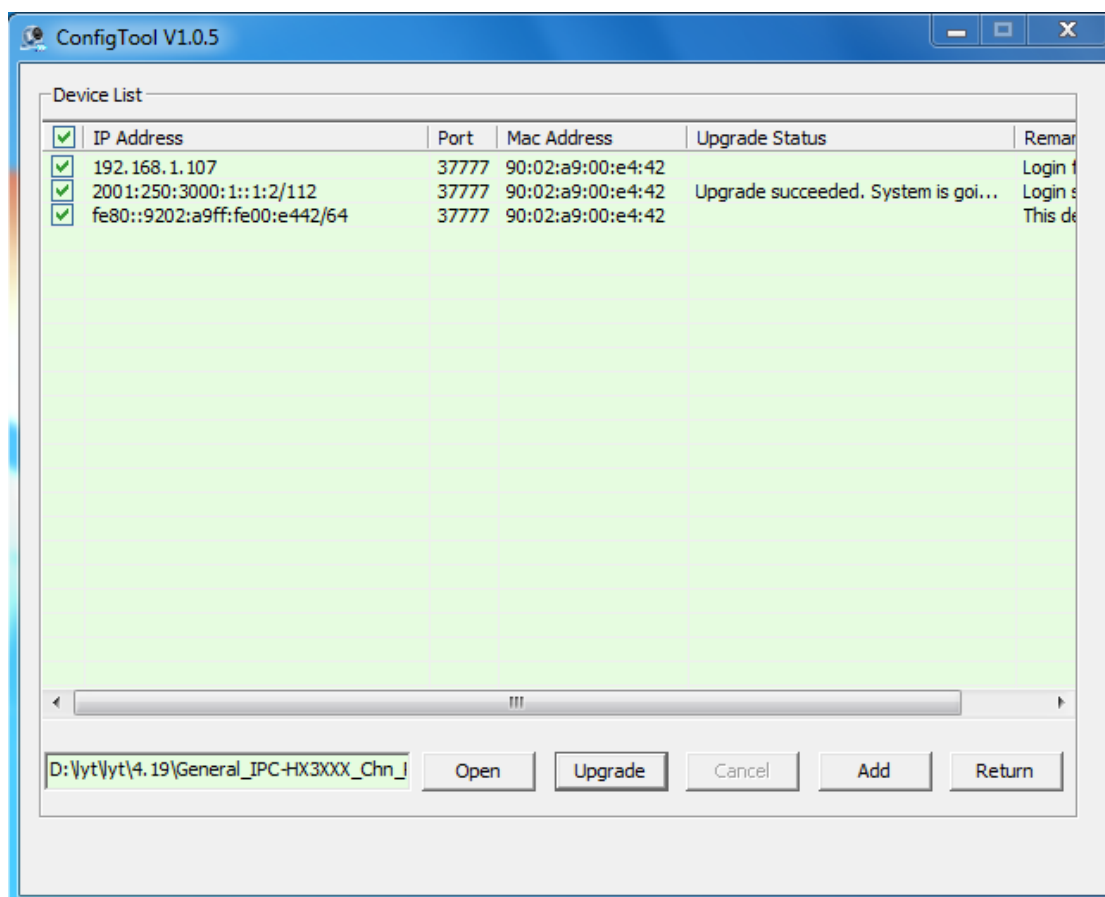
Click “upgrade” to show batch upgrade page. The device list contains the devices from search page, and user can click “Add” to add new device. Chose a upgrade file, and click the upgrade button to start batch upgrade. User can click “Cancel” button to cancel batch upgrade.



P12 Batch upgrade 1



P13 Batch upgrade 2



P13 Batch upgrade 2

## 4 Note:

First:

If upgrade failed, please make sure the upgrade file is correct and the device has the correct software version.

Second:

If device software has encountered bug and do not work correct. You can use 3800 port to login device, but you can't get other information.

Third:

If you want to use batch upgrade function, please make sure the device you select can use the same upgrade file.