

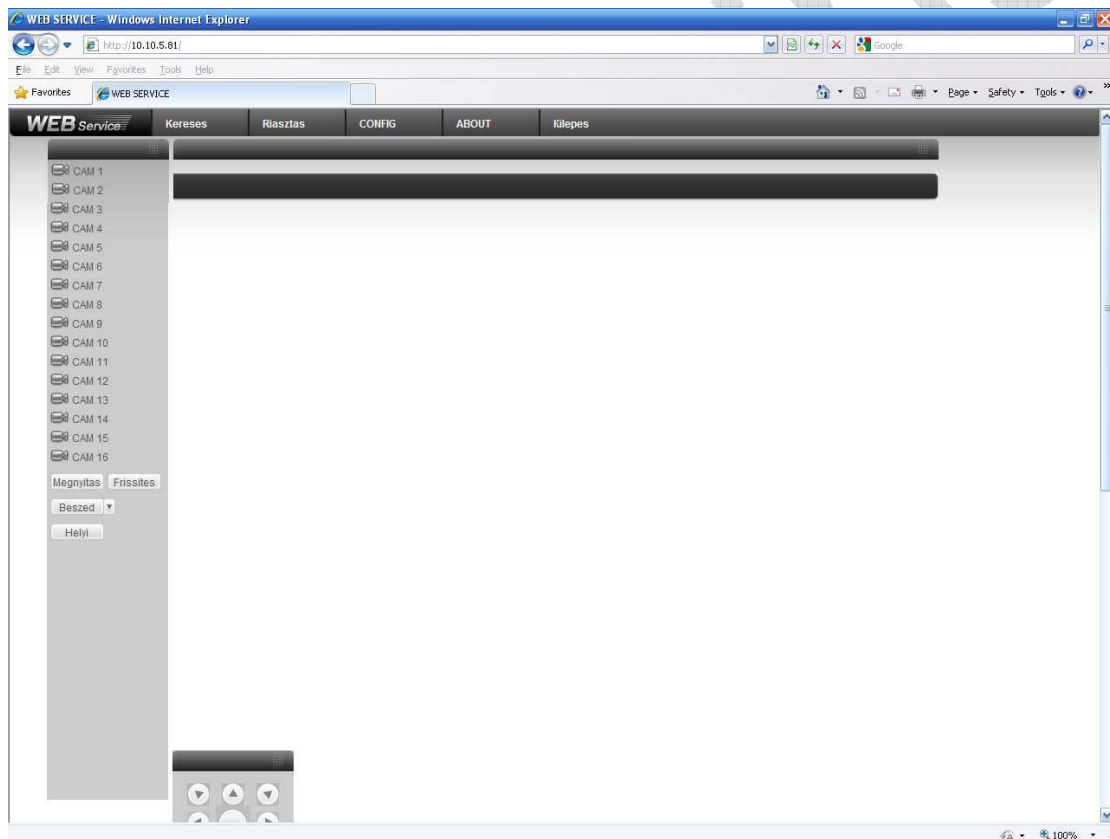
View DVR with IE8

1. General Description

This document is for how to view our DVR through web interface with IE8. When you meet problems with IE8, please refer to this manual.

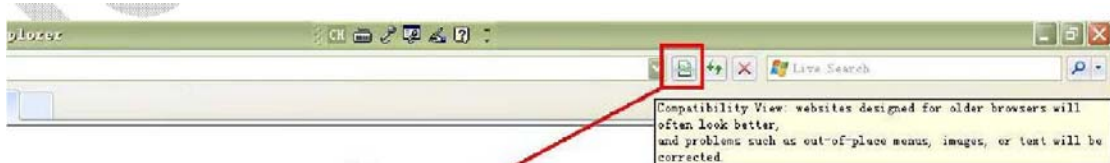
2. Run Web interface with IE8

For IE8, sometime it will not run with the right mode, there 2 ways to solve the problem



1、 Use the **Compatibility View** function of IE8

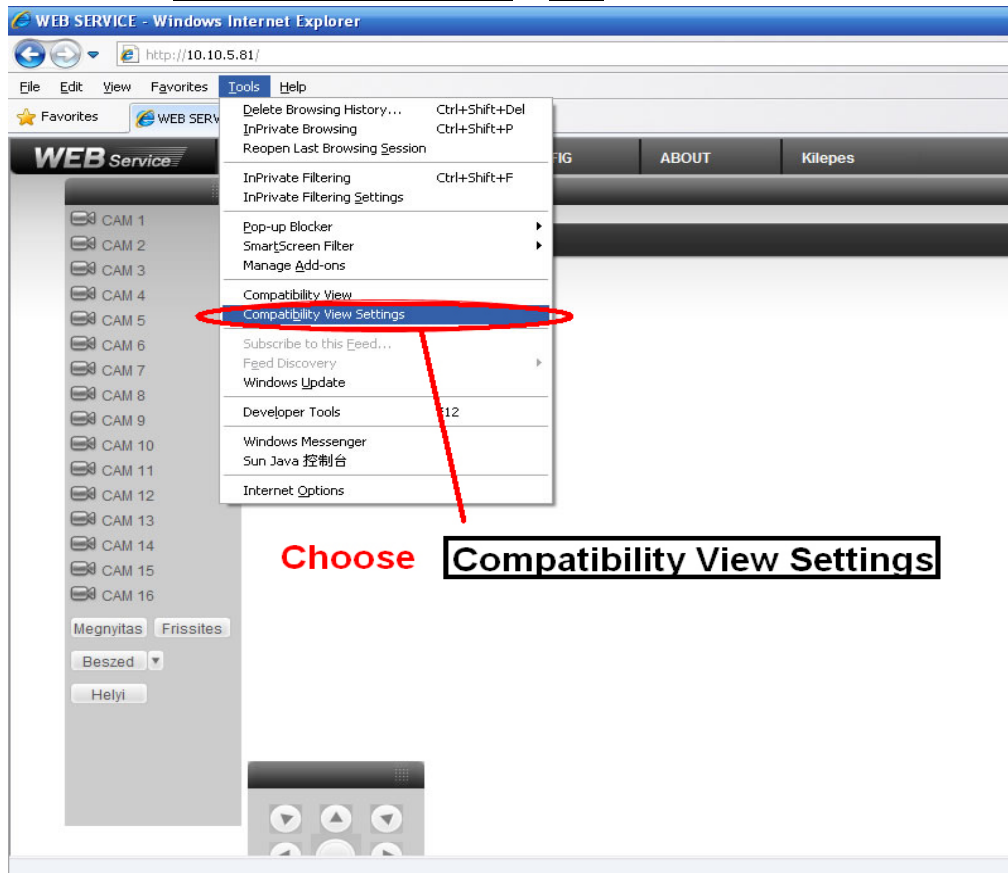
With this way, every time you open the IE interface, must click this button



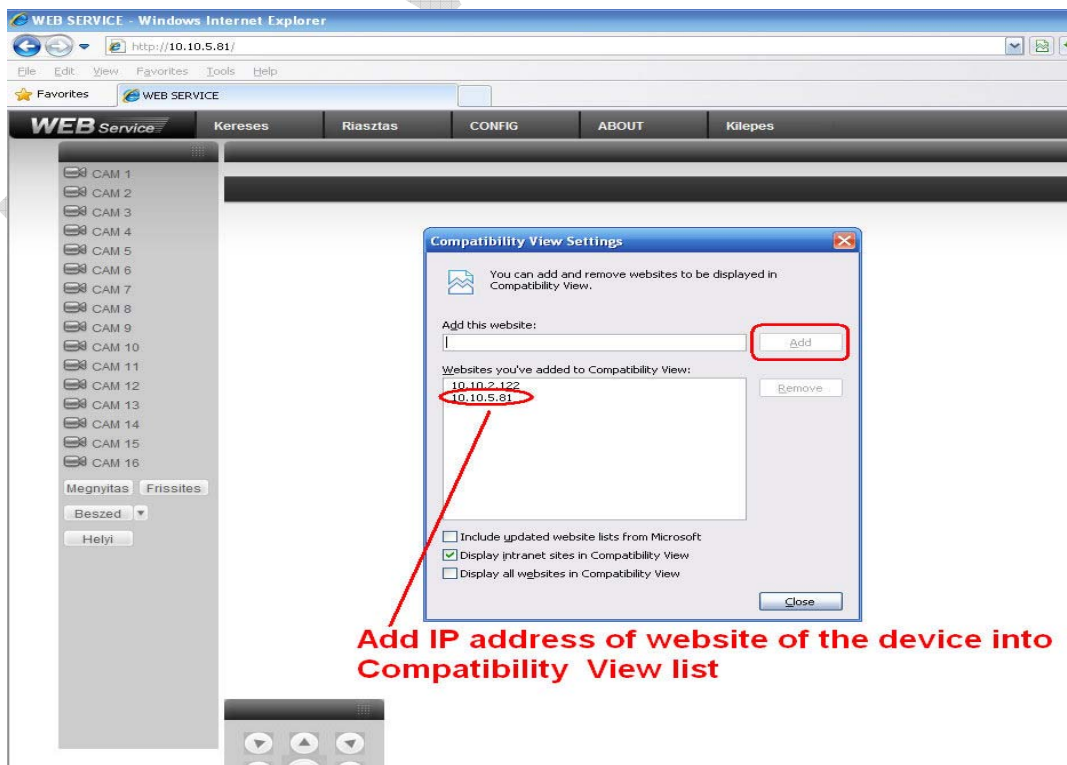
For IE8 if the interface is abnormal, please click the button

2. Add the certain IP address or website into **Compatibility View Settings**

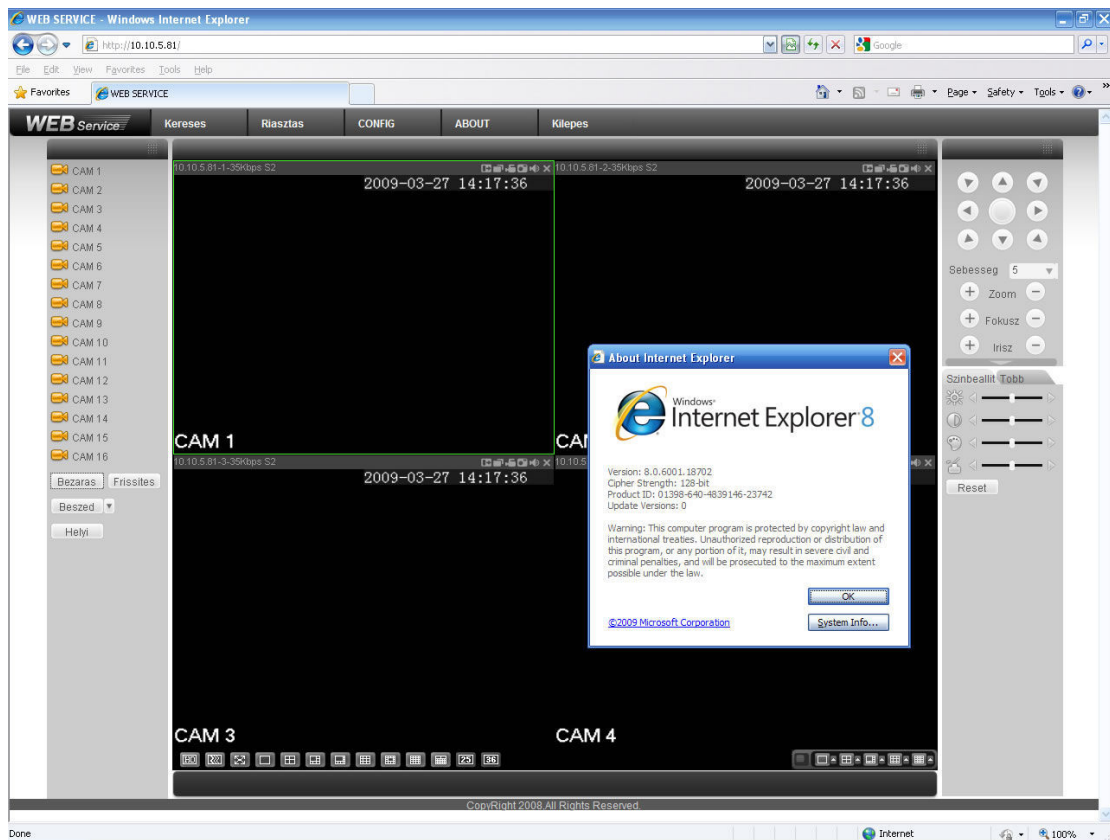
A. Choose **Compatibility View Settings** in **Tools** menu



B. Add the IP or domain name of DVR (NVR, IP Camera) into **Compatibility View Settings** list

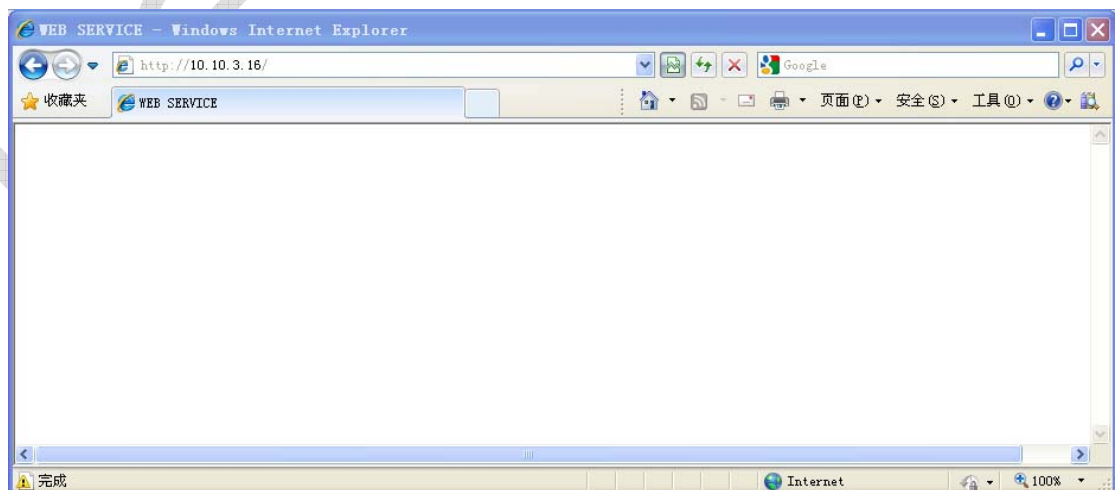


C. Now you can get the web interface with right mode

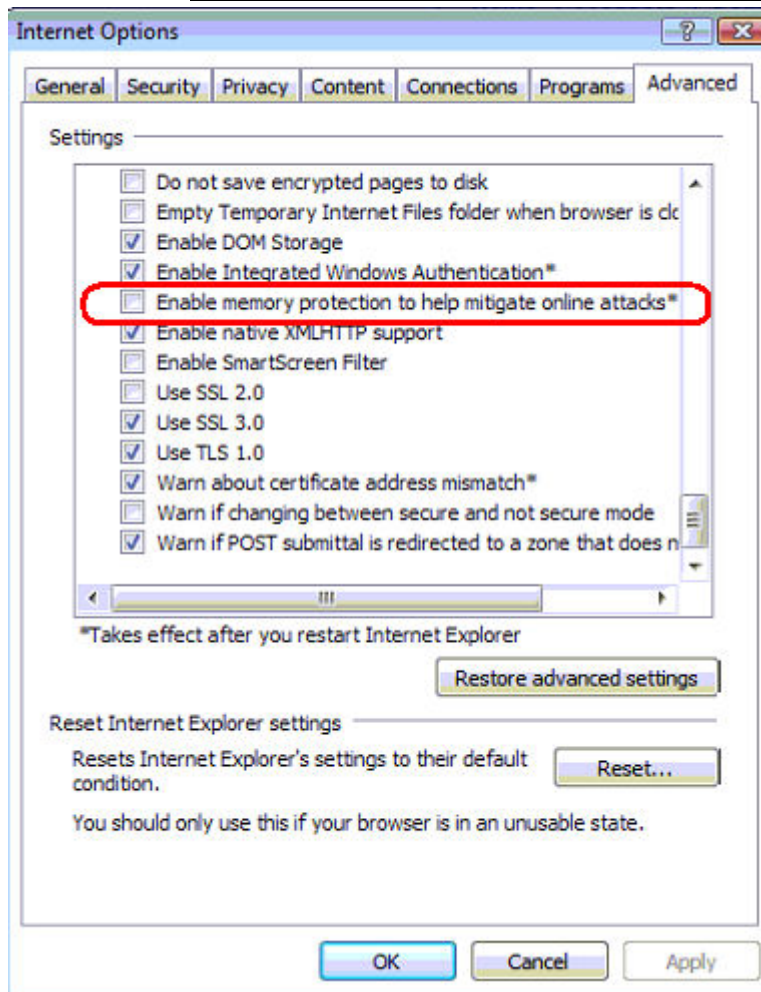


3. Download ActiveX with IE8

A. For some PC when update windows and install IE8, it will not install the ActiveX



B、 Please disable **Enable memory protection to help mitigate online attacks**



4. Further Information

If you still have any problems about these functions, please contact with our engineer